

FWG400

Air Foam Cleaning | Water Jet Spray | Air Blower | Vacuum | Cleaning Gun (4 in 1)

Brand / Country : Gison / Taiwan

Accessories :

- | | | |
|-----|------------------------|----|
| 1. | FOAM SET | *1 |
| 2. | CLEANING GUN | *1 |
| 3. | EXTENSION TUBE | *1 |
| 4. | CLAMPING RING | *2 |
| 5. | DUST BAG | *1 |
| 6. | SMALL-BORE VACUUM TUBE | *1 |
| 7. | FLAT TUBE | *1 |
| 8. | BRUSH | *1 |
| 9. | REAR HOSE | *1 |
| 10. | SPRAY GUN NOZZLE | *1 |
| 11. | WATER HOSE CONNECTOR | *1 |
| 12. | REAR CAP | *1 |
| 13. | VACUUM VALVE | *1 |
| 14. | HOSE ADAPTER | *1 |
| 15. | DEFLECTOR | *1 |
| 16. | PLUG | *1 |
| 17. | SPANNER | *1 |



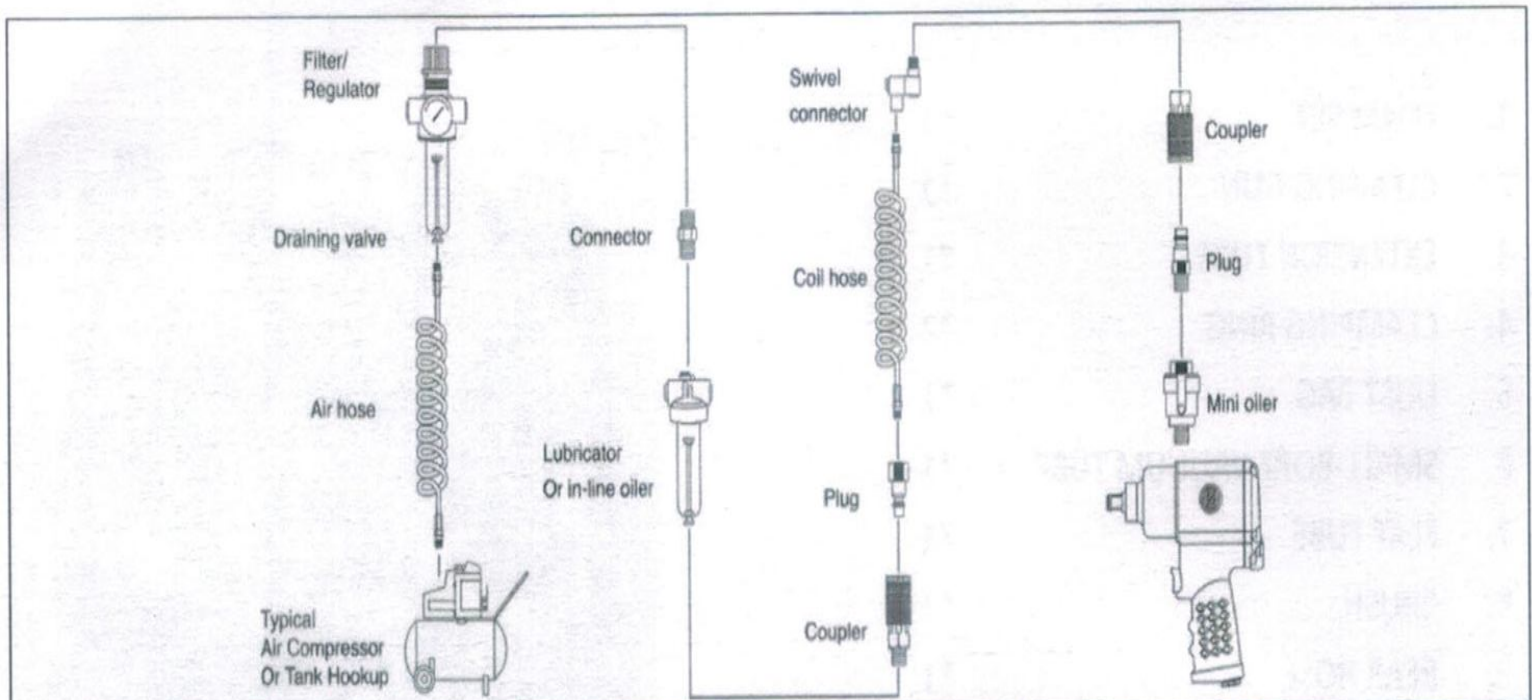
- A smart car cleaning tool with several specialized accessories, designed for Multi-function car cleaning, Convenient & Economical.
- Ideal for vehicle outside cleaning, including car surface, tire groove and wheel rim etc.
- Suitable for car seat, engine room and cabinet cleaning. Easy for operation.
- Necessary cleaning tool set for car repair shop.
- Patent pending.

www.ariestools.com.sg

Hot-line : +65-66447367 | Whatsapp : +65-81337251

Email : sales@ariestools.com.sg

Operating Instructions and Warning Information



Air supply...

Tools of this class operate on a wide range of air pressure. It is recommended that air pressure of these tools measure 90 psi at the tool while running free. Higher pressure (over 90psi, 6.2bar) raises performance beyond the rated capacity of the tool which will shorten the tool's life because of faster wear and could cause injury.

Always use clean, dry air. Dust, corrosive fumes and /or water in the air line will cause damage to the tool.

Drain the air tank daily. Clean the air inlet filter screen on at least a weekly schedule. The recommended hookup procedure can be viewed in the above figure. The air inlet used for connecting air supply. Has standard 1/4" NPT. Line pressure should be increased to compensate for unusually long air hoses (over 25 feet). Minimum hose diameter should be 3/8" I.D. and fittings should have the same inside dimensions and be tightly secured.

Operation...

When using the grinder be careful not to exert excessive force. Too much force could be hazardous if it causes the cutting tool spindle to bend or break.

The burning of the work piece or excessive speed reduction indicates too much force being applied. Changing to free cutting tool may be better for the desired rate of speed and stock removal.

Lubrication..

Lubricate the air motor daily with quality motor oil. If no air line oiler is used run a teaspoon of oil through the tool.










The oil can be squirted into the tool air inlet or into the hose at the nearest connection to the air supply. Then run the tool the oil plug is only for adding standard SAE 10 or 20 grade oil after repair or maintenance of the impact mechanism. The amount of oil to be used is 1 ounce overfilling will cause a reduction in the power of the tool.

WARNING !

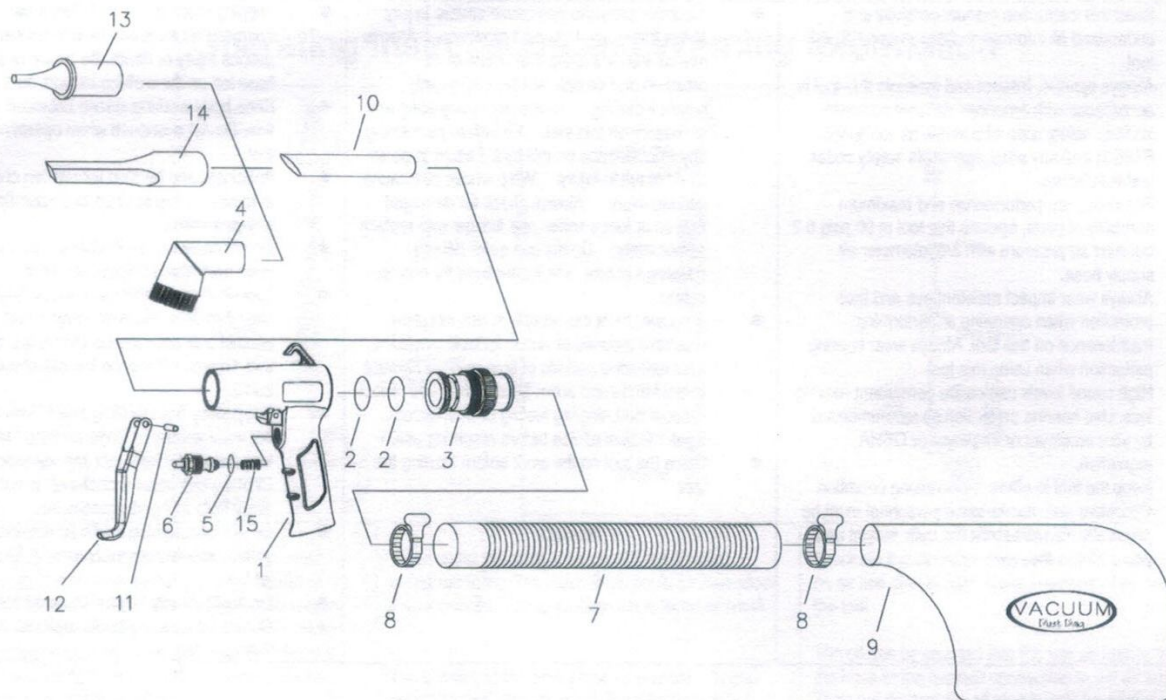
FAILURE TO OBSERVE THESE WARNINGS COULD RESULT IN INJURY.

This instruction manual contains important safety information.

<ul style="list-style-type: none"> Read this instruction manual carefully and understand all information before operating this tool. Always operate, inspect and maintain this tool in accordance with American national standards institute safety code of portable air tools(ANSI B186.1) and any other applicable safety codes and regulations. For safety, top performance and maximum durability of parts, operate this tool at 90 psig 6.2 bar max air pressure with 3/8" diameter air supply hose. Always wear impact resistant eye and face protection when operating or performing maintenance on this tool. Always wear hearing protection when using this tool. High sound levels can cause permanent hearing loss. Use hearing protection as recommended by your employer or employer or OSHA regulation. Keep the tool in efficient operating condition. Operators and maintenance personnel must be physically able to handle the bulk, weight and power of this tool. 	<ul style="list-style-type: none"> Air under pressure can cause severe in jury. Never direct air at yourself or others. Always turn off the air supply, drain hose of air pressure and detach tool from air supply before installing. Removing or adjusting any accessory on this tool. Or before performing any maintenance on this tool. Failure to do so could result in injury. Whip whose can cause serious injury. Always check for damaged. Frayed or loose hoses and fittings, and replace immediately. Do not use quick detach couplings at tool. See instructions for correct set-up Air power tools can vibrate in use vibration, repetitive motions or uncomfortable positions over extended periods of time may be harmful to our hands and arms. Discontinue use of tool if discomfort, tingling feeling or pain occurs. Seek medical advice before resuming use. Place the tool on the work before starting the tool. 	<ul style="list-style-type: none"> Slipping tripping and /or falling while operating air tools can be a major cause of serious injury or death. Be aware of excess hose left on the walking or work surface. Keep body working stance balanced and firm. Do not overreach when operating the tool. Anticipate and be alert for sudden changes in motion during start up and operation of any power tool. Do not carry tool by the hose. Protect the hose from sharp objects and heat. Tool shaft may continue to rotate briefly after throttle is released. Avoid direct contact with accessories during and after use. Gloves will reduce the risk of cuts or burns. Keep away from rotating end of tool. Do not wear jewelry or loose clothing . secure long hair away from tool and accessories. Choking can occur if neckwear is not kept away from tool and accessories. Do not lubricate tools with flammable or volatile liquids such as kerosene. Diesel or jet fuel. Do not force tool beyond its rated capacity Do not remove any labels replace any damaged labels.
---	---	---

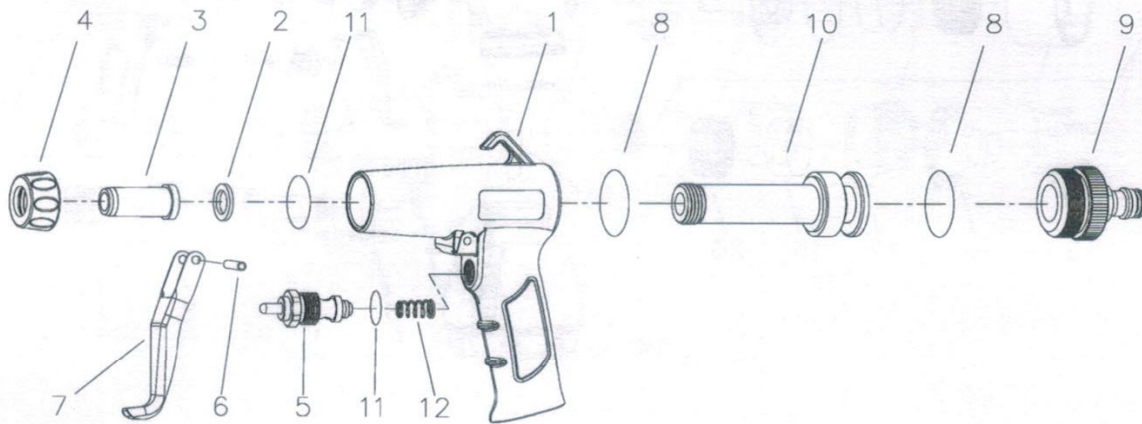
Description	Inspection	Daily	Weekly
Check the condition of air line accessories, and drain out the water from the separators and air line to keep the air supply system of air line clean and dry.		*	
Always keep the air pressure at 90psi (6.3kg/cm ²) for maximum tool performance and take your reading while the tool is running.	90 psi 	*	*
Use proper couplers, nipples, hoses, pipes and fittings.		*	*
Check that quick change couplers are in secure connection and good order.		*	*
Keep tools properly lubricated to prevent wear and rust.		*	
Always use safety goggles or a face shield when operating air tools. Never wear loose clothing that might get caught in the tool and cause injuries.		*	
While installing ship hoses or quick coupler directly into the tool, use a liquid pipe sealant to prevent damage to the housing from damage.(do not use Teflon tape)		*	
Always use proper wheel and pad for sanding and keep the secure connector in good order		*	*
Never use a sander as a grinder, Sanders are intended for sanding only.		*	
Always use accessories with a rated speed equal to or greater than the sander's speed.		*	*

Vacuum Gun Kit



NO.	Part No.	Description	Qty	NO.	Part No.	Description	Qty
1	0220SG15	Gun Body	1	10	0206G16	Extension Tube	1
2	0206G02	O-Ring	3	11	SP061	Pin	1
3	0220G19	Vacuum Valve	1	12	0220SG16	Trigger	1
4	0206G04	Brush	1	13	0204B02	Small-Bore Vacuum Tube	1
5	SO106	O-ring(SM009)	1	14	0204B03	Flat Tube	1
6	0210SET-1	Switch Set	1	15	0210G07	Spring	1
7	0201G14	Rear Hose	1				
8	0206G14	Clamping Ring	1				
9	0206G15	Dust Bag	1				

Blow Gun

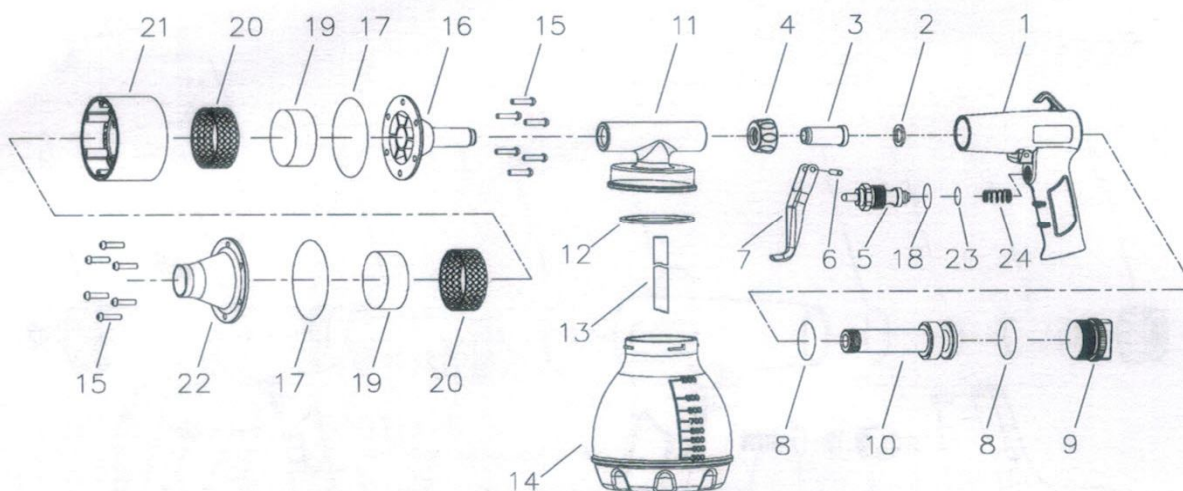


No	Part No.	Description	Qty	No	Part No.	Description	Qty
1	0220SG15	Gun Body	1	8	SO022	O-Ring(AS123)	2
2	SO086	O-Ring(P16)	1	9	0220SG14	Connector	1
3	0220SG10	Spray Nozzle	1	10	0220SG08	Deflector	1
4	0220SG09	Fixing Ring	1	11	SO106	O-Ring(SM009)	1
5	0210SET-1	Switch set	1	12	0210G07	Spring	1
6	SP061	Pin(4*22)	1				
7	0220SG16	Trigger	1				

R0

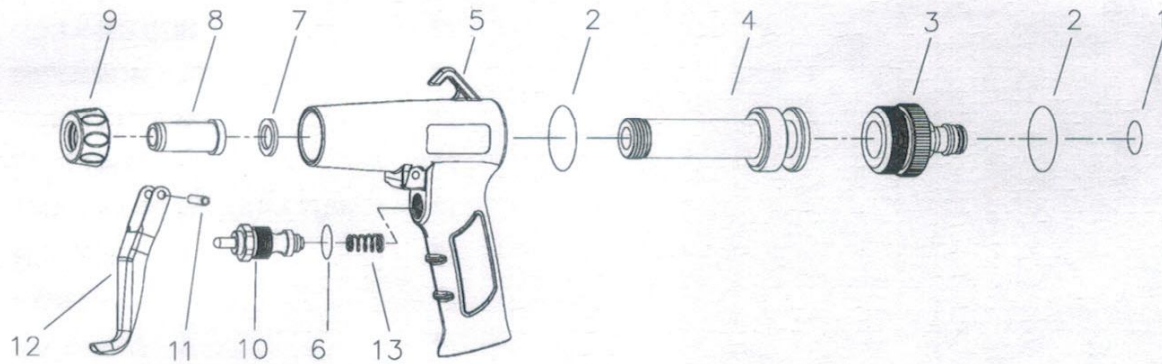
2015/11/13

Foam Cleaning Gun



NO	PartNo.	Description	Qty	NO	PartNo.	Description	Qty
1	0220G15	Gun Body	1	14	0220G02	Bottle Body	1
2	SO086	O-Ring(P16)	1	15	SH110	Screw & Spring Washer	12
3	0220G10	Spray Nozzle	1	16	0220G03	Rear End Cap	1
4	0220G09	Fixing Ring	1	17	SO110	O-Ring (AS 040)	2
5	0210SET-1	Switch Set	1	18	SO106	O-Ring(SM009)	1
6	SP061	Pin(4*22)	1	19	0220G13	Sponge	2
7	0220G16	Trigger	1	20	0220G06	Inner Ring	2
8	SO022	O-Ring(AS123)	2	21	0220G04	Outer Cap	1
9	0220G11	Rear Cap	1	22	0220G05	Front End Cap	1
10	0220G08	Deflector	1	23	SO008	O-Ring (P6)	1
11	0220G01	Bottle Cap	1	24	0210G07	Spring	1
12	SO109	O-Ring(AS 228)	1				
13	0220G12	Straw	1				

Water Spray Gun



No.	PartNo.	Description	Qty	No.	PartNo.	Description	Qty
1	SO051	O-Ring(AS 111)	1	8	0220SG10	Spray Nozzle	1
2	SO022	O-Ring(AS123)	2	9	0220SG09	Fixing Ring	1
3	0220SG14	Connector	1	10	0210SET-1	Switch Set	1
4	0220SG08	Deflector	1	11	SP061	Pin (4*22)	1
5	0220SG15	Gun Body	1	12	0220SG16	Trigger	1
6	SO106	O-Ring(SM009)	1	13	0210G07	Spring	1
7	SO086	O-Ring(P16)	1	14	0220G18	Water Hose Adaptor	1